

K2 PLUS COMBO EPIC LEAP OF COLOR & SIZE

Next-level Professional 3D Printer

- CFS for Multicolor 3D Printing
- 350mm Cubed Print Size
- Actively Heated Build Chamber
- 60°C
- Dual AI Cameras



INTELLIGENT MANAGEMENT OF MULTIPLE FILAMENTS

Auto Identification & Mapping | Auto Run-out/Tangle Detection
Auto Filament Switch & Relay | Moisture-proof Filament Storage
Spring-loaded Batten Bar | Cardboard Spool Compatibility



16 COLORS LEVEL UP YOUR CREATIVITY

The CFS comes with a connection hub on the back. By hooking up as many as four CFS units together, you are able to print in the splendor of 16 colors. Saves the need for extra painting afterward.

POWERFULLY BUILT "MATRIX" FRAME

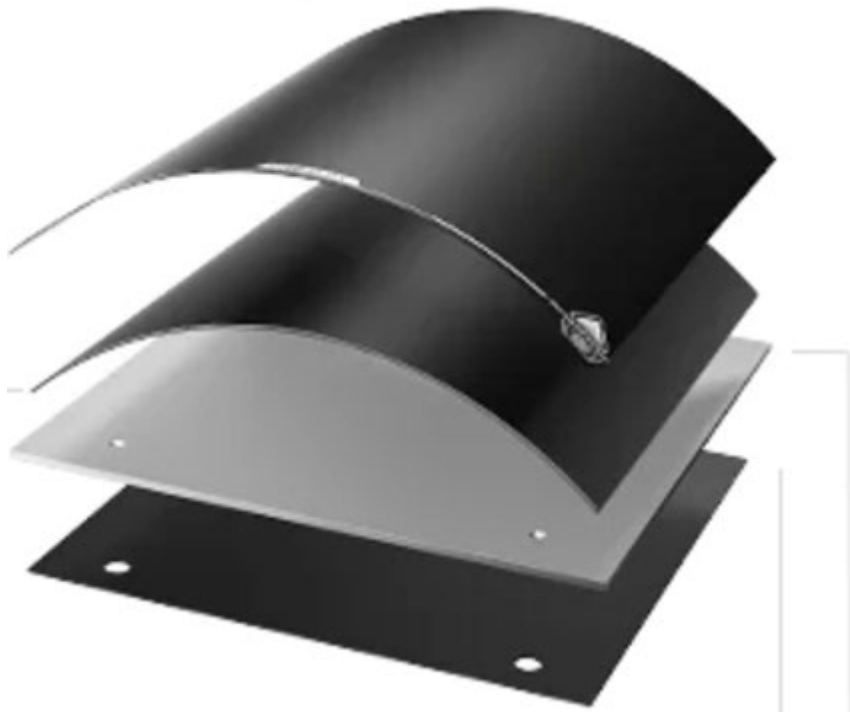
A Sturdy, King-sized
Beast



DUAL Z-AXIS ASSISTED BY 4 LINEAR RODS

Extremely steady while carrying the print bed up and down. Users will no longer have to worry about layer shifts occurring throughout their printing experience.





5MM THICK ALUMINUM ALLOY HEATBED

Holding exceptionally well against deformation and vibration.



PRECISE STEEL X-AXIS LINEAR RAIL

INCREDIBLY QUIET WHILE PRINTING HARD

The working noise of K2 Plus is only 45dB, which is credited to the virtue of step-servo motors, dynamically balanced fans, and a snug enclosure. It is no louder than someone typing on a laptop PC, truly a creative machine you can work next to.



BLAZING SPEED, A NEW RECORD

For a large-format machine, 600mm/s is pretty fast, but that's not the whole story. Turbocharged by the step-servo motors, it can accelerate at a staggering 30000mm/s²*.

3D Benchy
10min*



Size: 60*31*48mm
Filament: Hyper-PLA

3D Cube
3hours*

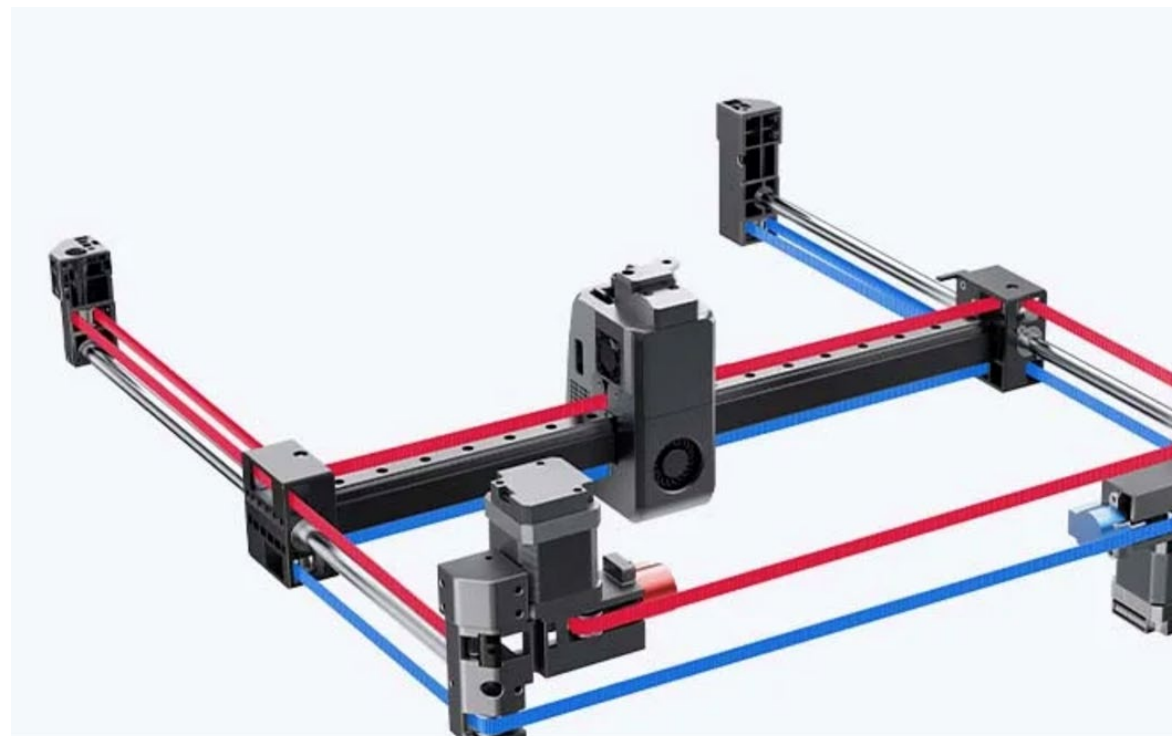


Castle
48hours*



ACTIVE BELT TENSIONING

Timing belts may get loose over time, leading to poor print quality and accuracy. On the K2 Plus, the belt tension is checked and rigged actively by a pressure sensor instead of manually. Now, belt tensioning is a thing you can forget about.

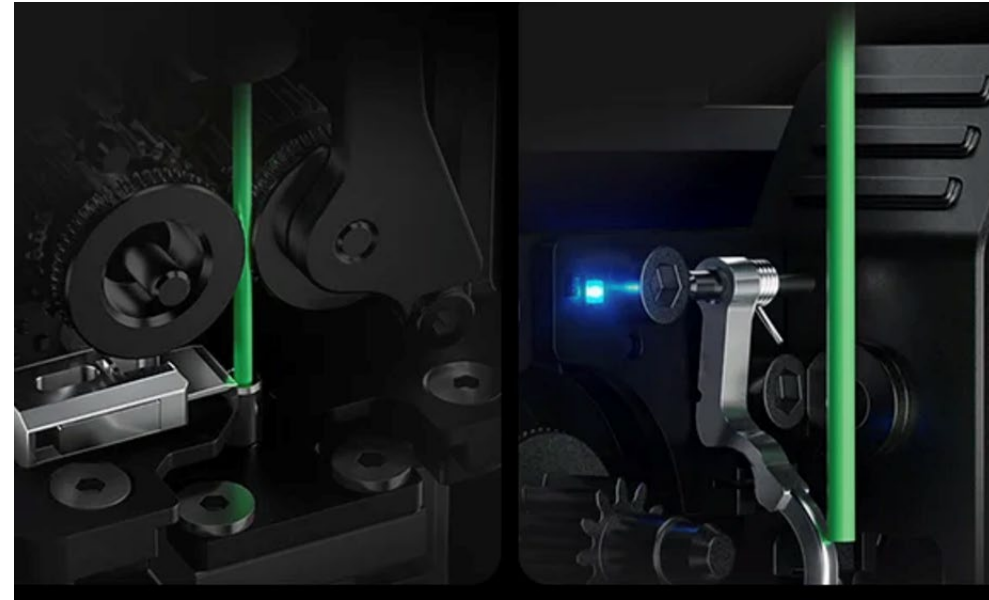


AUTOMATED RUN-OUT & SENSOR FILAMENT CUTTER

The steel-bladed cutter features a magnetic retraction mechanism for precise filament positioning and minimal waste, with an indicator to replace the filament when only one inch remains.

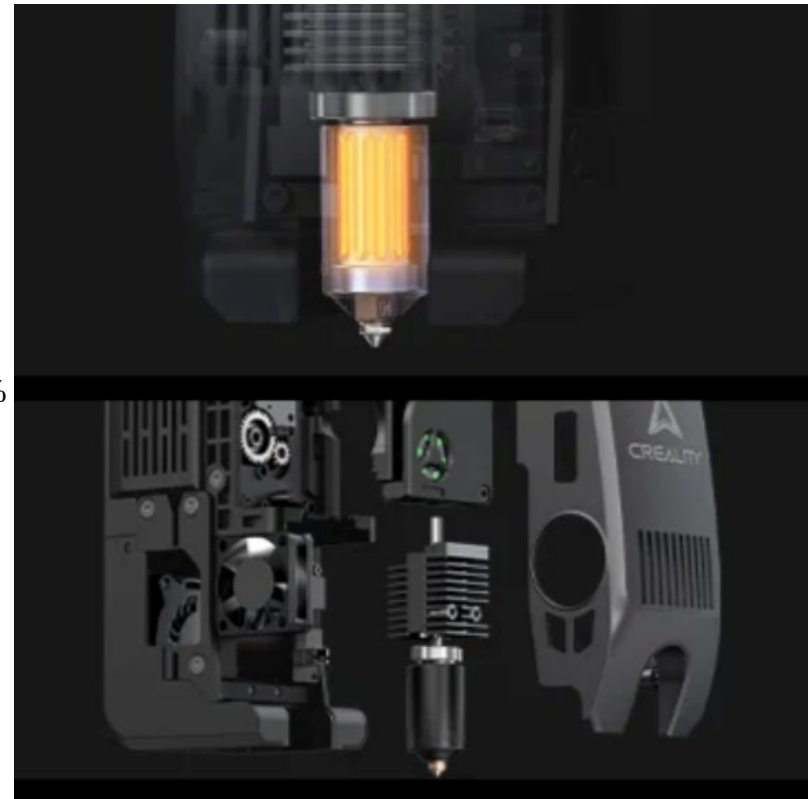
NEXT-GEN DIRECT DRIVE EXTRUDER

So Many Features Neatly Packed



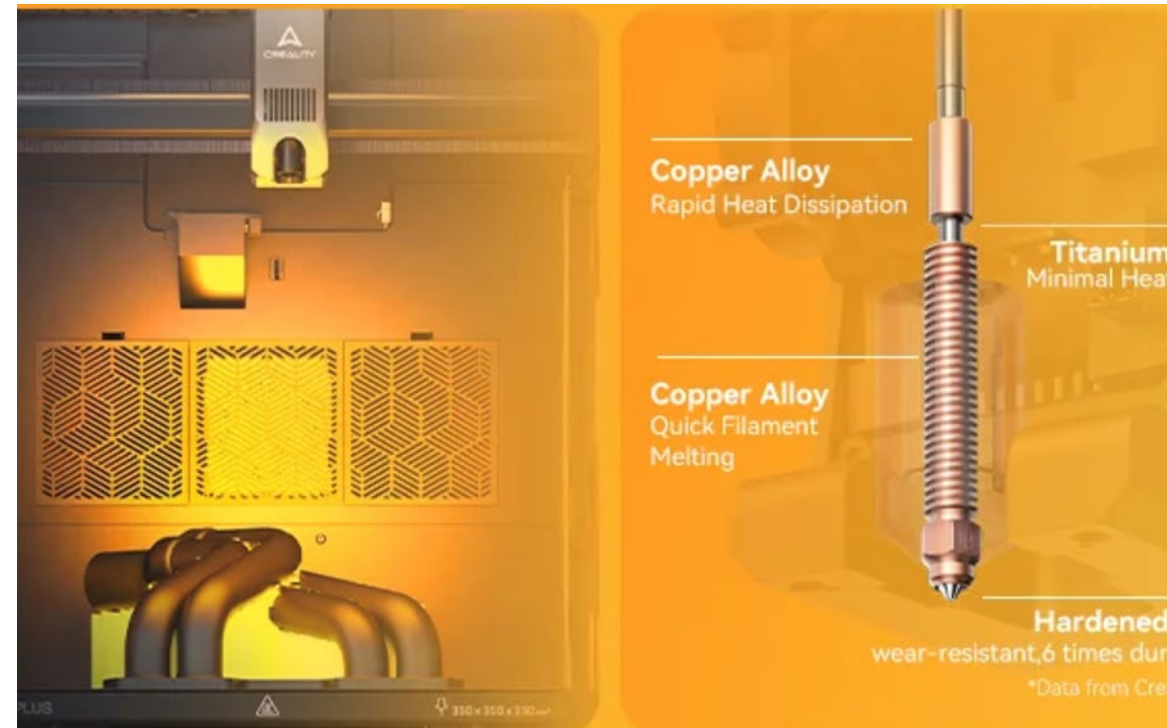
40MM³/S HIGH-FLOW HOTEND

Powered by an 80W heater, the flow rate of ABS at 280° can reach 40mm³/s*, 66% higher than the previous design.



ACTIVELY HEATED CHAMBER & HIGH-TEMP

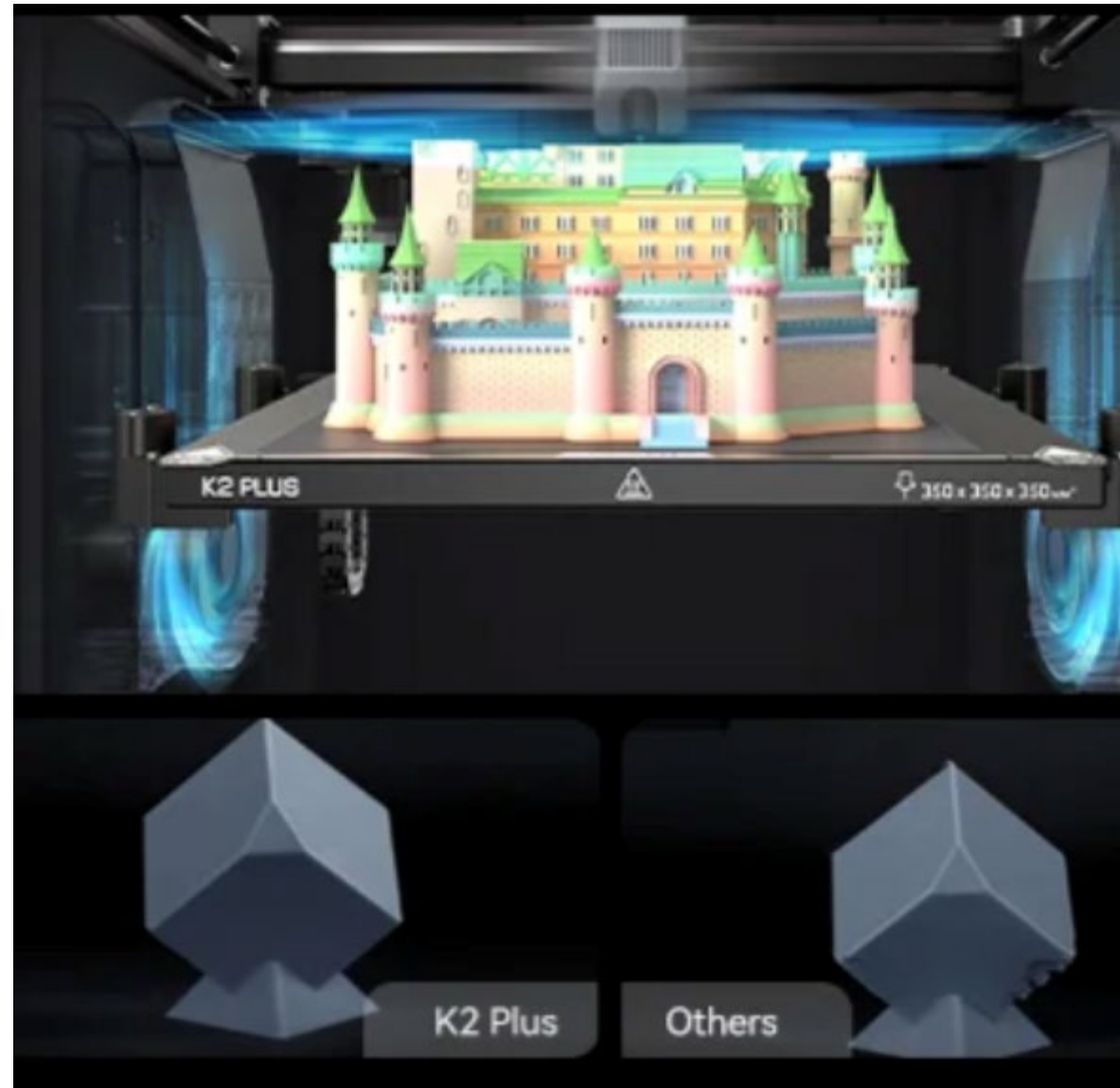
Nozzle with Hardened Steel Tip



EMPOWERING MORE USE SCENARIOS & PHENOMENAL PRINT QUALITY, EVERY TIME

TWO AUXILIARY FANS SET THE STYLE RIGHT OFF

The part cooling airflow is nearly doubled as two auxiliary cooling fans are installed on the left and right sides of the chamber. The shapes and styles of your model will be set before any stringing and warping can happen.



DUAL AI CAMERAS AND MANY MORE

Advanced Intelligence Has Your Back



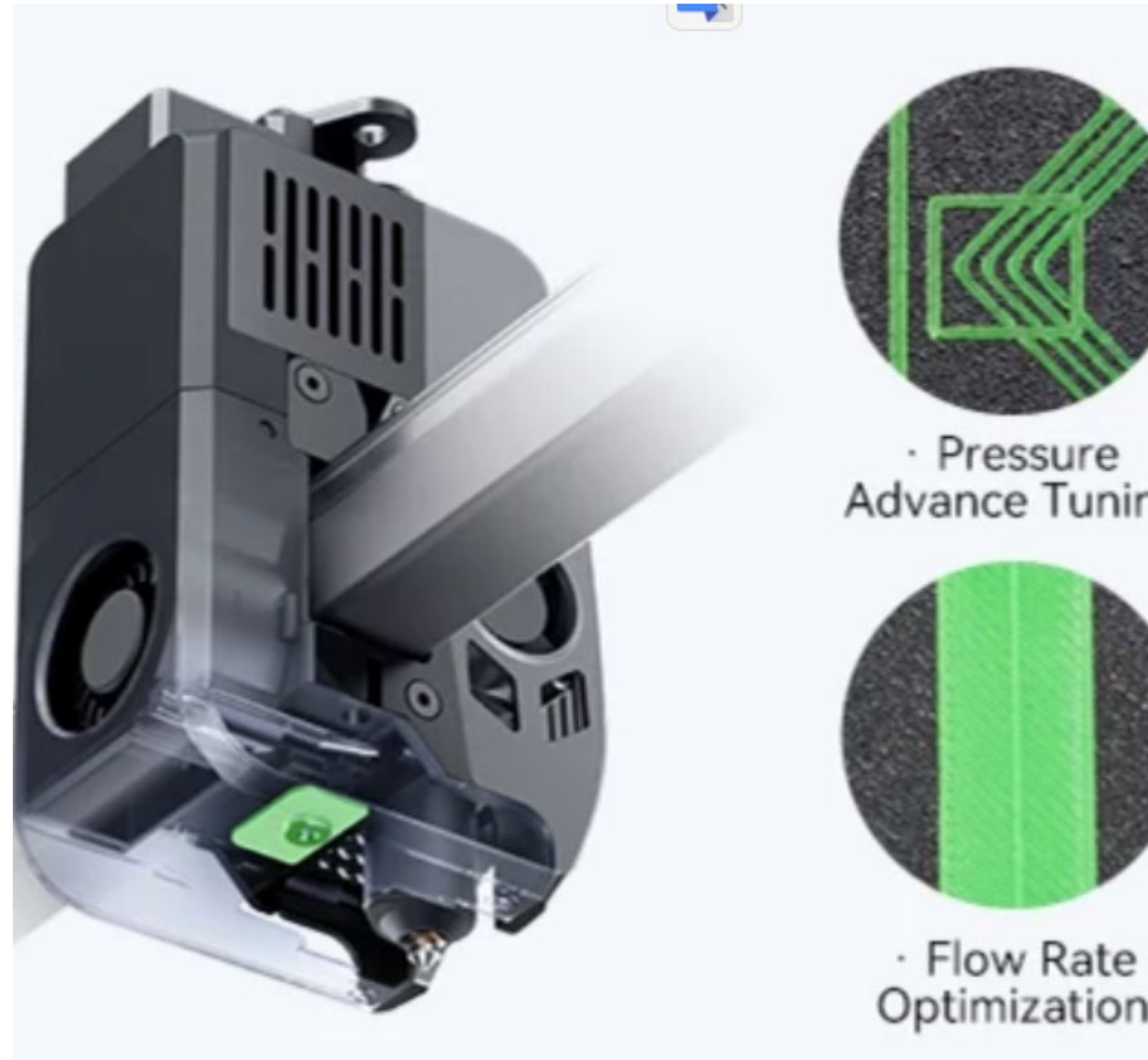
CHAMBER AI CAMERA KEEPS A KEEN WATCH

K2 Plus uses an AI camera on the chamber side to watch over spaghetti failure, foreign objects, idling, etc. It will alert you when an error occurs. It also supports real-time monitoring and time-lapse filming.



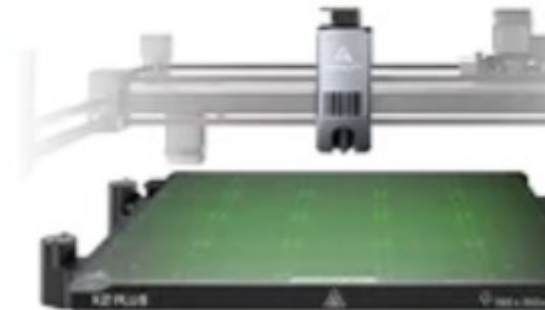
TOOLHEAD AL CAMERA

Tunes the Flow Rate



INGENIOUS ANTI-TILT AUTO LEVELING

K2 Plus features dual independently motorized Z-axes for automatic tilt reduction, strain gauge-based auto-leveling compensation, and a pro-level first layer capability that ensures a smooth and neat initial layer without manual intervention.



SMARTER SOFTWARE FOR A SEAMLESS WORKFLOW

The latest Creality OS will unlock the full power of your 3D printer. It features smart multi-filament management and allows for fine-tuning in expert mode or with root access. FLUIDD WebUI is also supported for your convenience.



USER- FRIENDLY LIKE A HOUSEHOLD APPLIANCE

K2 Plus is pre-assembled, so you can use it right after unpacking and screen installation. Then, a boot-up quick guide covers self-tests.

AWESOME FEATURES OTHERS MAY NOT OFFER

